






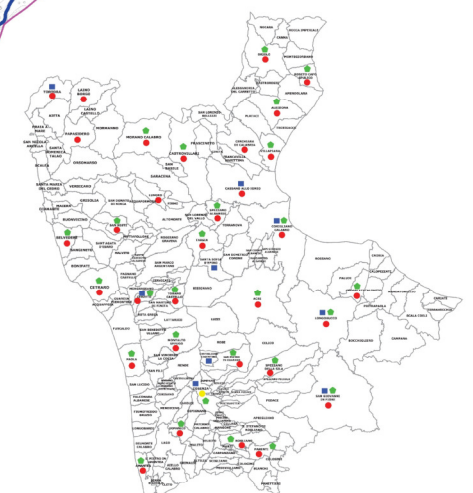
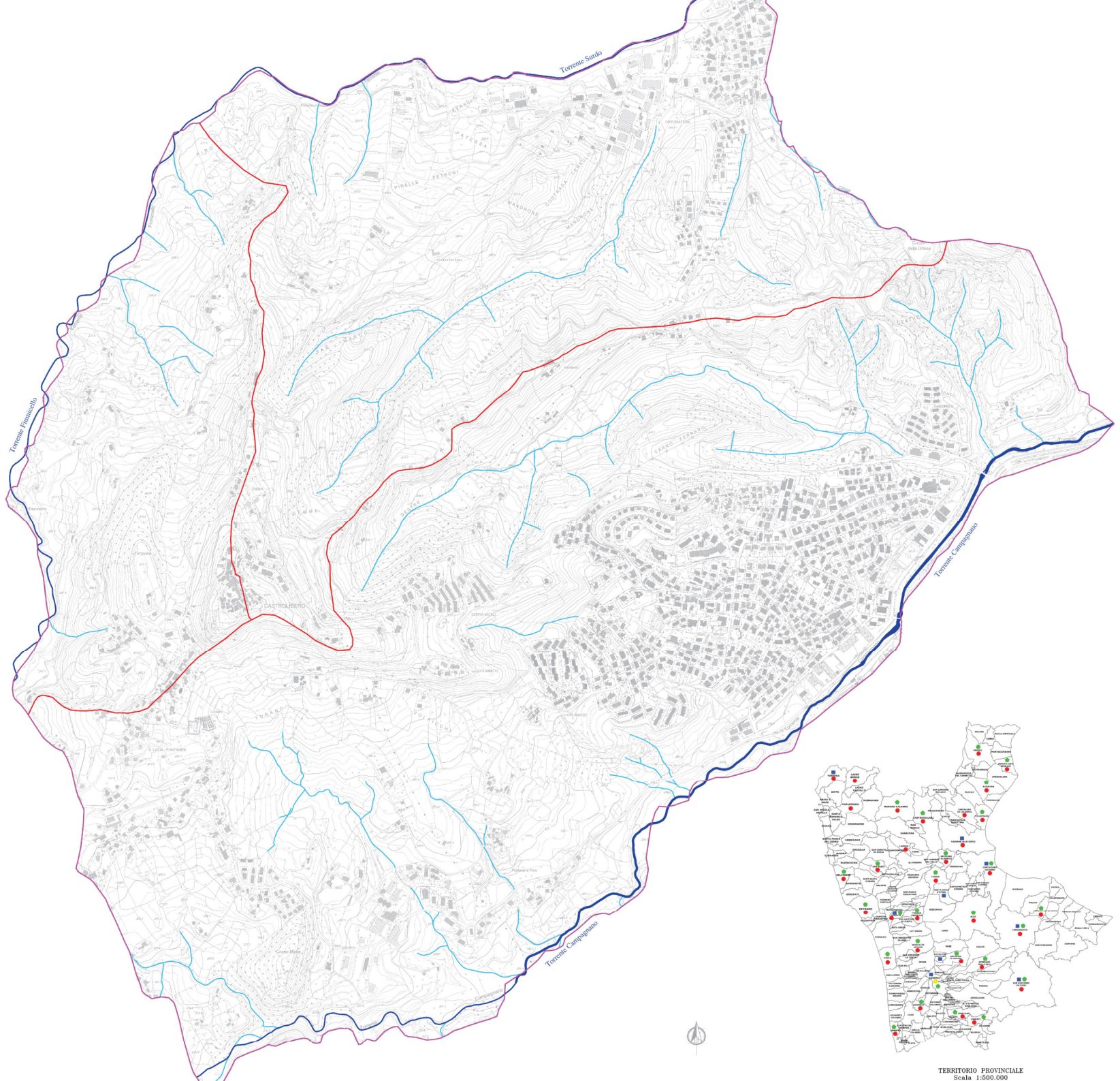


Reticolo Idrografico Provinciale



LEGENDA

-  Corsi d'acqua principali
-  Corsi d'acqua secondari
-  Stazione pluviometrica
-  Stazione pluviometrica di riferimento
-  Stazione termometrica
-  Stazione idrometrica
-  Bacini idrografici



TERRITORIO PROVINCIALE  
Scala 1:500.000



COMUNE DI CASTROLIBERO  
- PROVINCIA DI COSENZA -  
PIANO DI PROTEZIONE CIVILE  
COMUNALE  
aggiornamento/adequamento novembre 2017

CARTA IDROGRAFICA

Tav. n° 3  
scala 1: 5.000



Approvazioni

PROGETTISTA

Ing. Giancarlo Rosa  
*Giancarlo Rosa*



PIANO DI PROTEZIONE CIVILE COMUNALE

Piano di Protezione Civile Comunale - Comune di Castrolibero (CS)